

Tennessee Comprehensive Assessment Program

TCAP/CRA 2013



7

Anchor Set

Grade 7 – High and Low Elevations Task

SECURE MATERIAL - Reader Name: _____

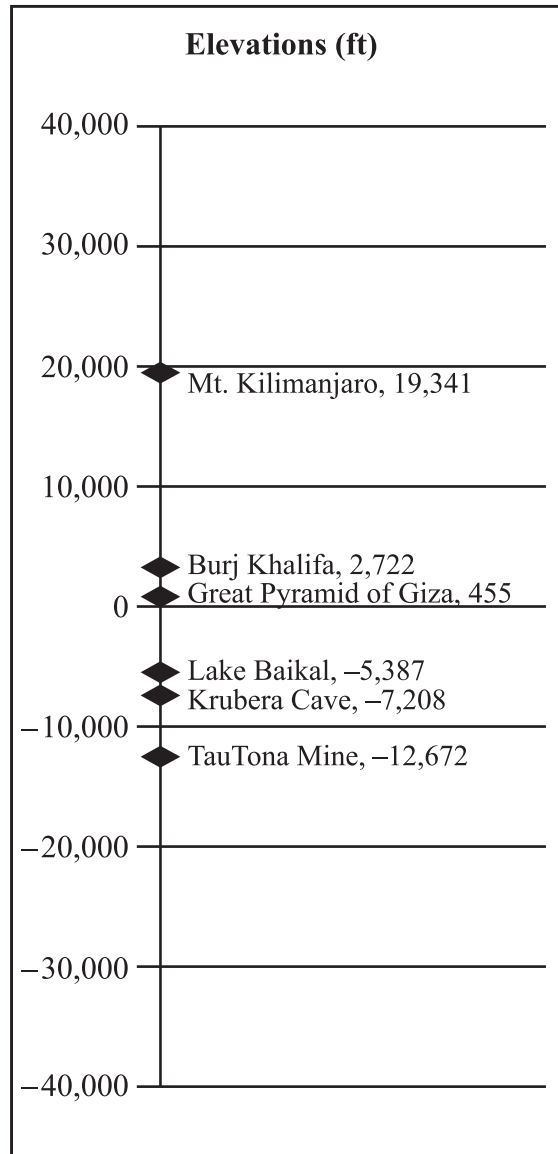
Tennessee Comprehensive Assessment Program

Copyright © 2013 by the University of Pittsburgh and published under contract with Tennessee State Department of Education by Measurement Incorporated, 423 Morris Street, Durham, North Carolina, 27701. Testing items licensed to the Tennessee State Department of Education. All rights reserved. No part of this publication may be reproduced or distributed in any form or by any means, or stored in a database or retrieval system, without the prior written permission of Tennessee Department of Education and the University of Pittsburgh.

Constructed Response Assessment

High and Low Elevations Task

Jahara looks in an atlas and finds that the top of Mt. Everest is 29,029 feet above sea level and the deepest part of the Marianas Trench in the Pacific Ocean is 36,069 feet below sea level. She has a number line that shows heights and depths for other physical features around the world.

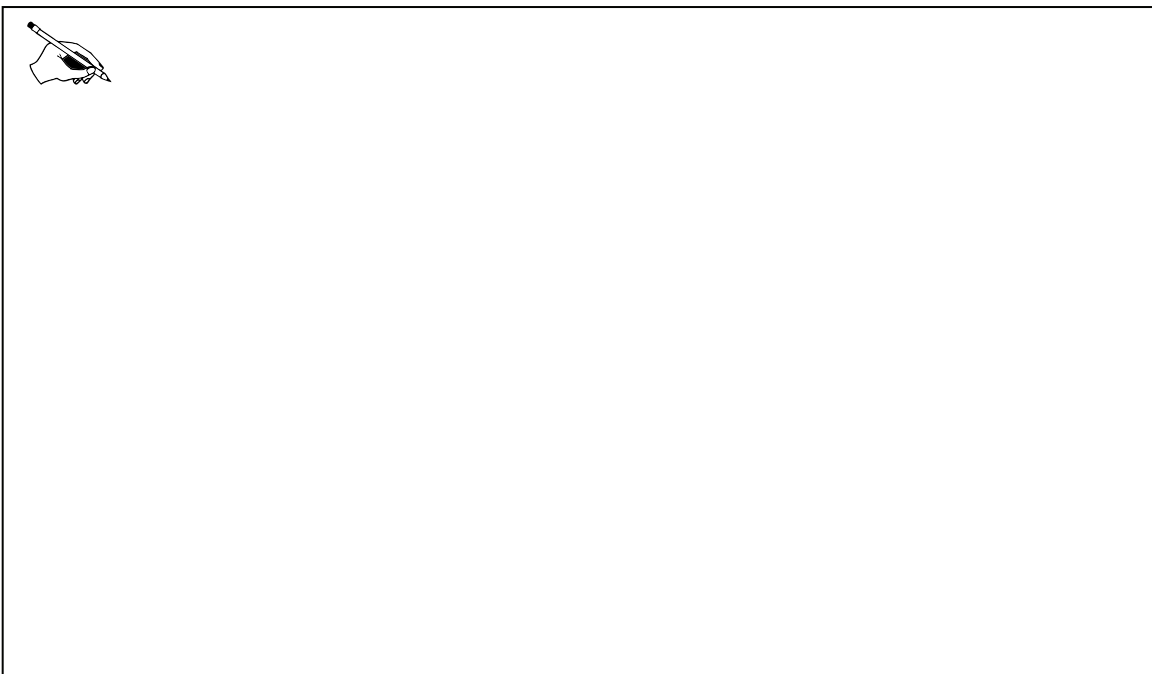


Constructed Response Assessment

- a. Represent Mt. Everest and the Marianas Trench on the number line. Use the number line to find the difference in these two elevations.



- b. Write two equivalent expressions that can be used to find the difference in elevation between Mt. Everest and the Marianas Trench. At least one of the expressions must use subtraction.



Scoring Guide

The CCSS for Mathematical Content (2 points)

7.NS.A.1 Uses a vertical number line to determine the difference in elevation between Mt. Everest and the Marianas Trench. The student may demonstrate this in any of the following ways: _____

- Summing the distance from 0 of each point;
- Counting by a consistent increment from one point to the other and making adjustments as necessary.

(1 Point)

7.NS.A.1c Writes two equivalent expressions. The following are correct expressions; students may meet the content standard even if they use numbers that do not reflect the problem context. _____

- $29,029 - (-36,069)$
- $29,029 + 36,069$
- $29,029 + |-36,069|$
- $|29,029 - (-36,069)|$
- $|(-36,069) - 29,029|$

(1 Point)

The CCSS for Mathematical Practice (2 points)

MP1 Completes all parts of the problem by plotting points and interpreting the number line and recognizes that the difference in elevations is the same regardless of the method used to calculate. **(1 Point)** _____

(MP1: Make sense of problems and persevere in solving them.)

MP6 Numerical expressions and all calculations are correct, mathematical language and notation is precise (when used), and uses correct numbers to represent the elevations. **(1 Point)** _____

(MP6: Attend to precision.)

TOTAL POINTS: 4

The CCSS for Mathematical Content Addressed In This Task

Apply and extend previous understandings of operations with fractions to add, subtract, multiply, and divide rational numbers.

7.NS.A.1 Apply and extend previous understandings of addition and subtraction to add and subtract rational numbers; represent addition and subtraction on a horizontal or vertical number line diagram.

7.NS.A.1c Understand subtraction of rational numbers as adding the additive inverse, $p - q = p + (-q)$. Show that the distance between two rational numbers on the number line is the absolute value of their difference, and apply this principle in real-world contexts.

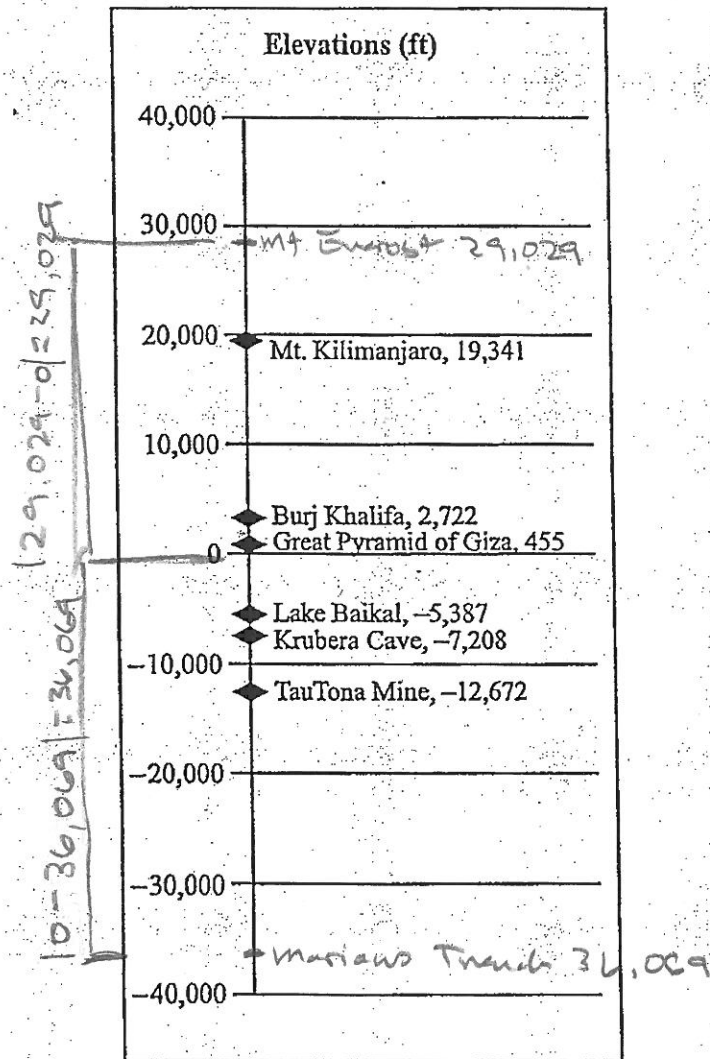
The CCSS for Mathematical Practice*

1. Make sense of problems and persevere in solving them.
2. Reason abstractly and quantitatively.
3. Construct viable arguments and critique the reasoning of others.
4. Model with mathematics.
5. Use appropriate tools strategically.
6. Attend to precision.
7. Look for and make use of structure.
8. Look for and express regularity in repeated reasoning.


* Gray type indicates Mathematical Practices not addressed in this assessment.

3. High and Low Elevations Task

Jahara looks in an atlas and finds that the top of Mt. Everest is 29,029 feet above sea level and the deepest part of the Marianas Trench in the Pacific Ocean is 36,069 feet below sea level. She has a number line that shows heights and depths for other physical features around the world.




- a. Represent Mt. Everest and the Marianas Trench on the number line. Use the number line to find the difference in these two elevations.

 From Mt Everest to 0 is 29,029 ft.
 From 0 to Marianas Trench is 36,069 ft.
 So, total difference is

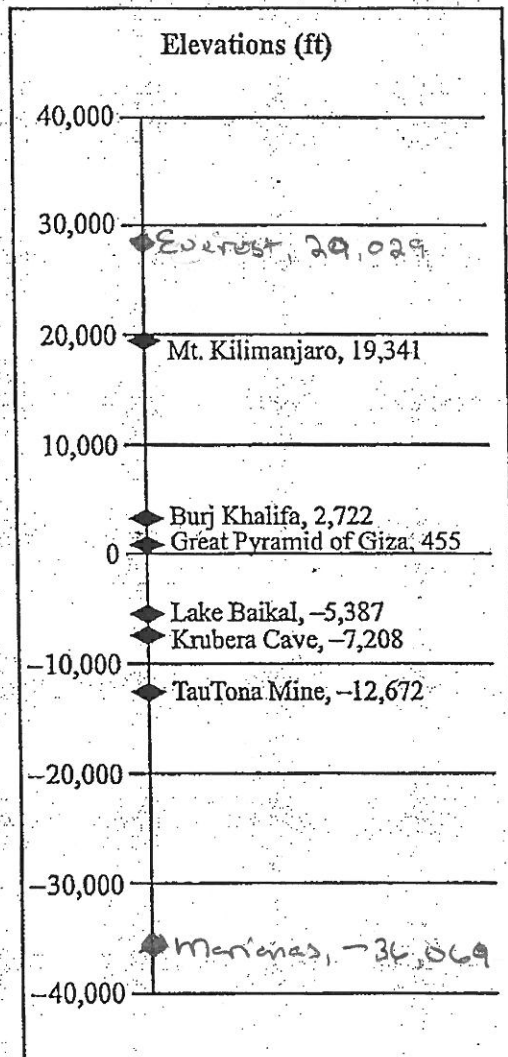
$$\begin{array}{r}
 29,029 \\
 + 36,069 \\
 \hline
 65,098 \text{ ft}
 \end{array}$$

- b. Write two equivalent expressions that can be used to find the difference in elevation between Mt. Everest and the Marianas Trench. At least one of the expressions must use subtraction.

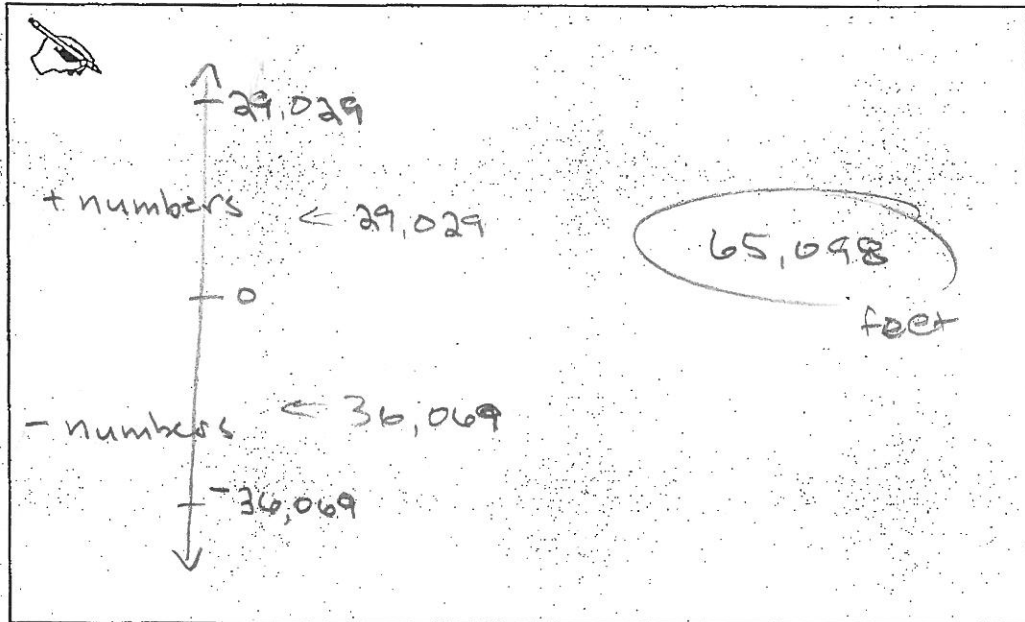
 $29,029 + 36,069 \leftarrow \text{addition}$
 $29,029 - (-36,069) \leftarrow \text{subtraction}$

3. High and Low Elevations Task

Jahara looks in an atlas and finds that the top of Mt. Everest is 29,029 feet above sea level and the deepest part of the Marianas Trench in the Pacific Ocean is 36,069 feet below sea level. She has a number line that shows heights and depths for other physical features around the world.



- a. Represent Mt. Everest and the Marianas Trench on the number line. Use the number line to find the difference in these two elevations.

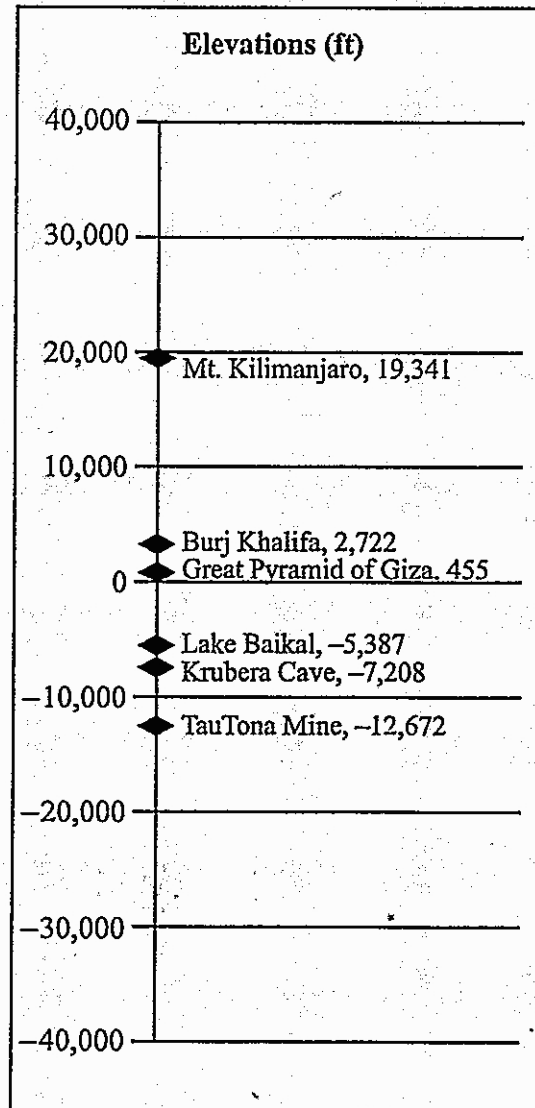


- b. Write two equivalent expressions that can be used to find the difference in elevation between Mt. Everest and the Marianas Trench. At least one of the expressions must use subtraction.

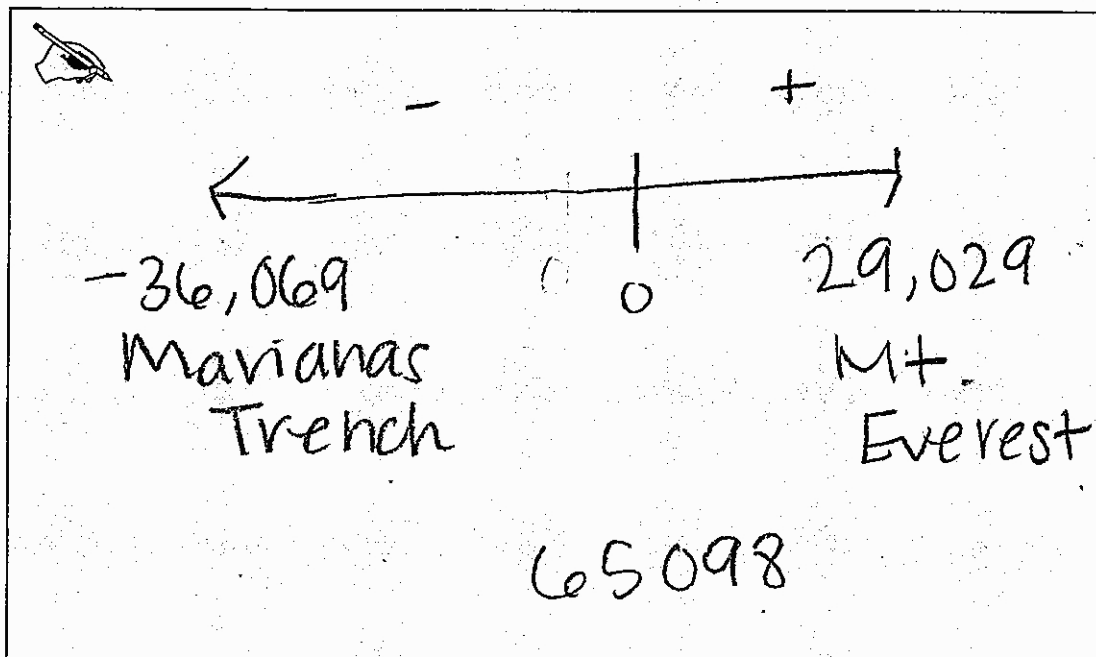
Hand-drawn mathematical expressions for finding the difference in elevation. The first expression is $29,029 + 36,069 = 65,098$. The second expression is $36,069 + 29,029 = 65,098$.

3. High and Low Elevations Task

Jahara looks in an atlas and finds that the top of Mt. Everest is 29,029 feet above sea level and the deepest part of the Marianas Trench in the Pacific Ocean is 36,069 feet below sea level. She has a number line that shows heights and depths for other physical features around the world.



- a. Represent Mt. Everest and the Marianas Trench on the number line. Use the number line to find the difference in these two elevations.



- b. Write two equivalent expressions that can be used to find the difference in elevation between Mt. Everest and the Marianas Trench. At least one of the expressions must use subtraction.

$29029 - -36069 = ?$
 65098

$29029 + 36069 = ?$
 65098

Anchor 3

Litho 0075

Total Content Points: 2 (7.NS.A.1, 7.NS.A.1c)

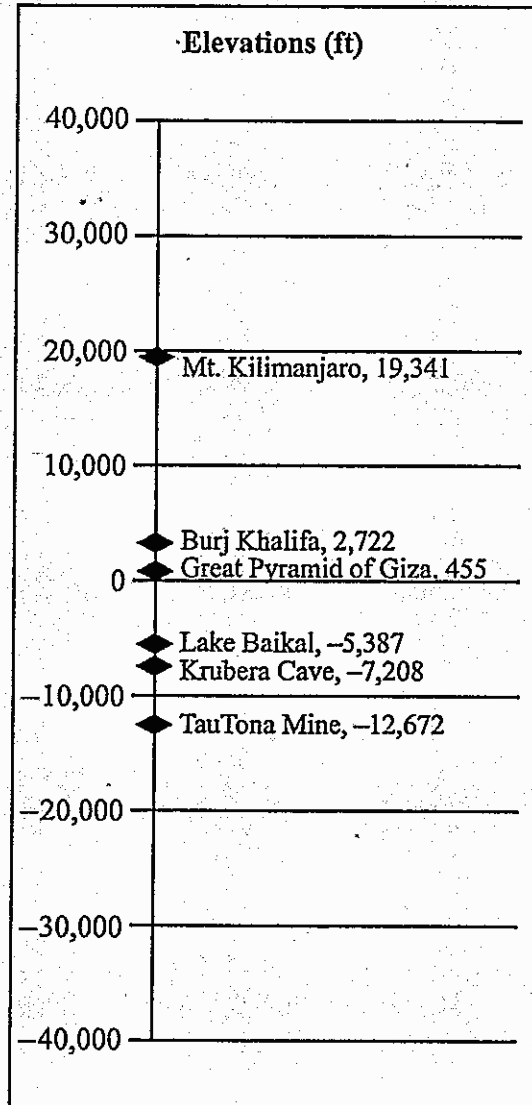
Total Practice Points: 0

The student correctly determines the difference in elevation between Mt. Everest and the Marianas Trench in Part A (7.NS.A.1). In Part B, the student writes two equivalent expressions that can be used to find the difference in elevation. One of the expressions uses subtraction (7.NS.A.1c). The student does not plot points and does not complete all parts of the problem (no credit for MP1). By not plotting points, the student fails to provide enough work to demonstrate precision (no credit for MP6).

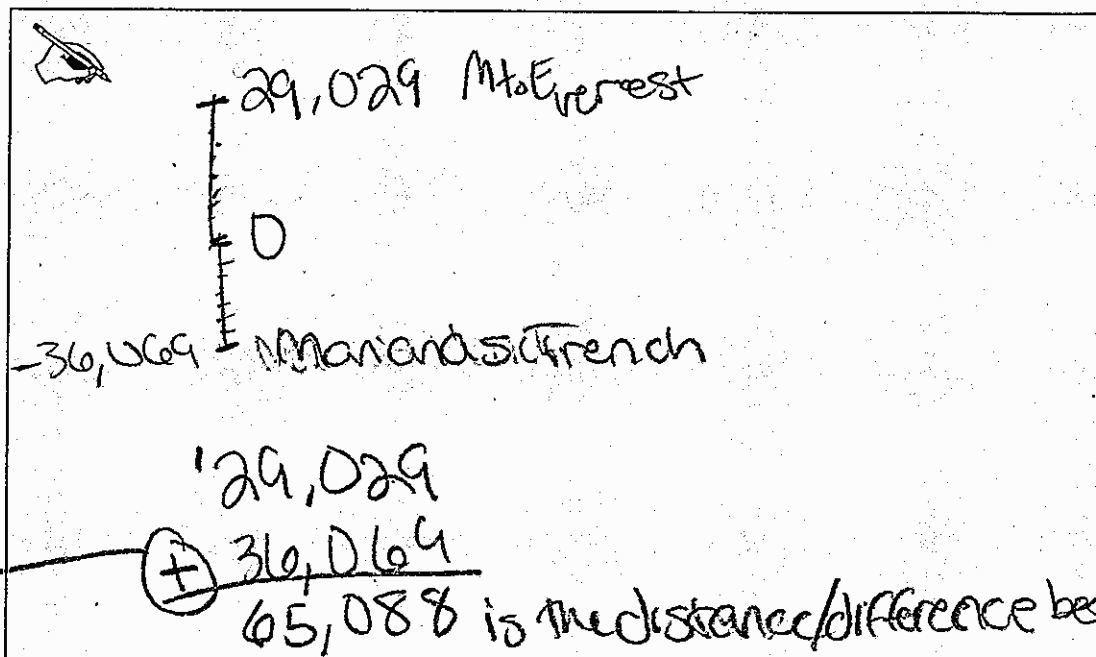
Total Awarded Points: 2 out of 4

3. High and Low Elevations Task

Jahara looks in an atlas and finds that the top of Mt. Everest is 29,029 feet above sea level and the deepest part of the Marianas Trench in the Pacific Ocean is 36,069 feet below sea level. She has a number line that shows heights and depths for other physical features around the world.



- a. Represent Mt. Everest and the Marianas Trench on the number line. Use the number line to find the difference in these two elevations.



- b. Write two equivalent expressions that can be used to find the difference in elevation between Mt. Everest and the Marianas Trench. At least one of the expressions must use subtraction.

A hand-drawn box containing two mathematical expressions. The first expression is $29,029 - (-36,069)$. The second expression is $29,029 + 36,069$. To the left of the expressions, there is a small drawing of a pencil.

$29,029 - (-36,069)$

$29,029 + 36,069$

Anchor 4

Litho 0025

Total Content Points: 1 (7.NS.A.1c)

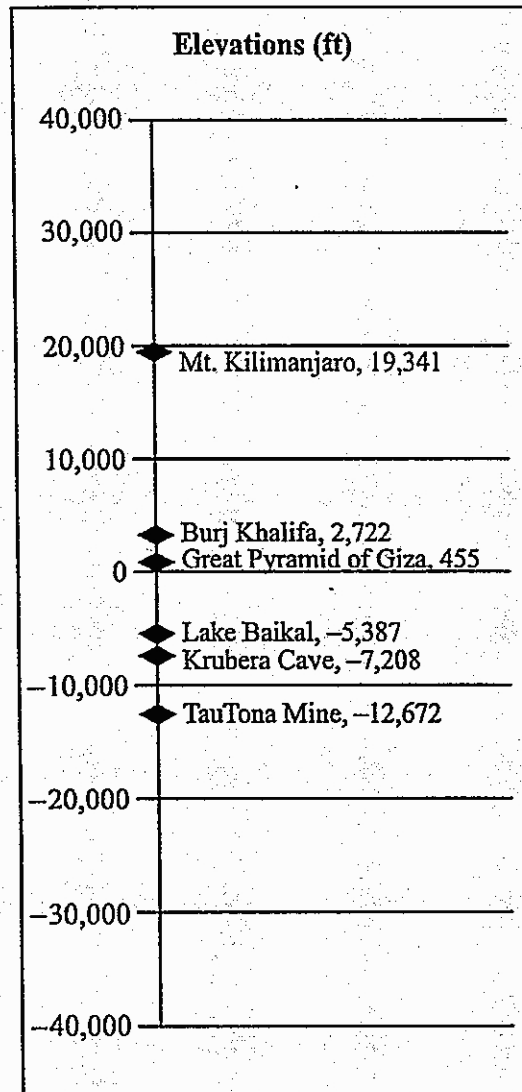
Total Practice Points: 1 (MP1)

The student does not correctly determine the difference in elevation in Part A (no credit for 7.NS.A.1). In Part B, the student writes two equivalent expressions which can be used to find the difference in elevation. One of the expressions uses subtraction (7.NS.A.1c). The student completes all parts of the problem by plotting points, correctly interpreting the number line by placing the Marianas Trench below sea level, providing an answer to Part A, and giving two expressions—one of which uses subtraction—in Part B (MP1). The student makes an addition error in Part A ($29,029 + 36,069 = 65,088$), showing a lack of precision (no credit for MP6).

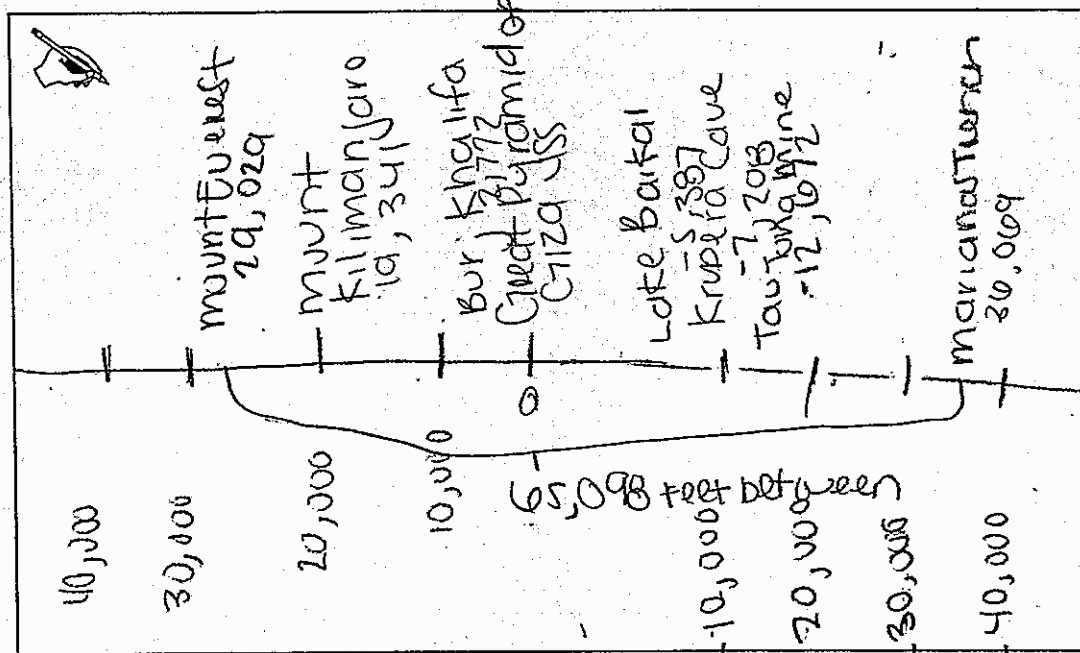
Total Awarded Points: 2 out of 4

3. High and Low Elevations Task

Jahara looks in an atlas and finds that the top of Mt. Everest is 29,029 feet above sea level and the deepest part of the Marianas Trench in the Pacific Ocean is 36,069 feet below sea level. She has a number line that shows heights and depths for other physical features around the world.



- a. Represent Mt. Everest and the Marianas Trench on the number line. Use the number line to find the difference in these two elevations.



- b. Write two equivalent expressions that can be used to find the difference in elevation between Mt. Everest and the Marianas Trench. At least one of the expressions must use subtraction.

① $A - B = 65,098$

$A = \text{Mount Everest}$
 $B = \text{Mariana Trench}$

②

$$\begin{array}{r} 29,029 \\ - 36,069 \\ \hline 65,098 \end{array}$$

A hand-drawn box containing two parts. Part 1 shows a circled '1' followed by the equation $A - B = 65,098$. Below this, A is defined as 'Mount Everest' and B as 'Mariana Trench'. Part 2 shows a circled '2' followed by a vertical subtraction problem: $29,029$ minus $36,069$ equals $65,098$. A small drawing of a pencil is in the top left corner of the box.

Anchor 5

Litho 00447200012

Total Content Points: 1 (7.NS.A.1)

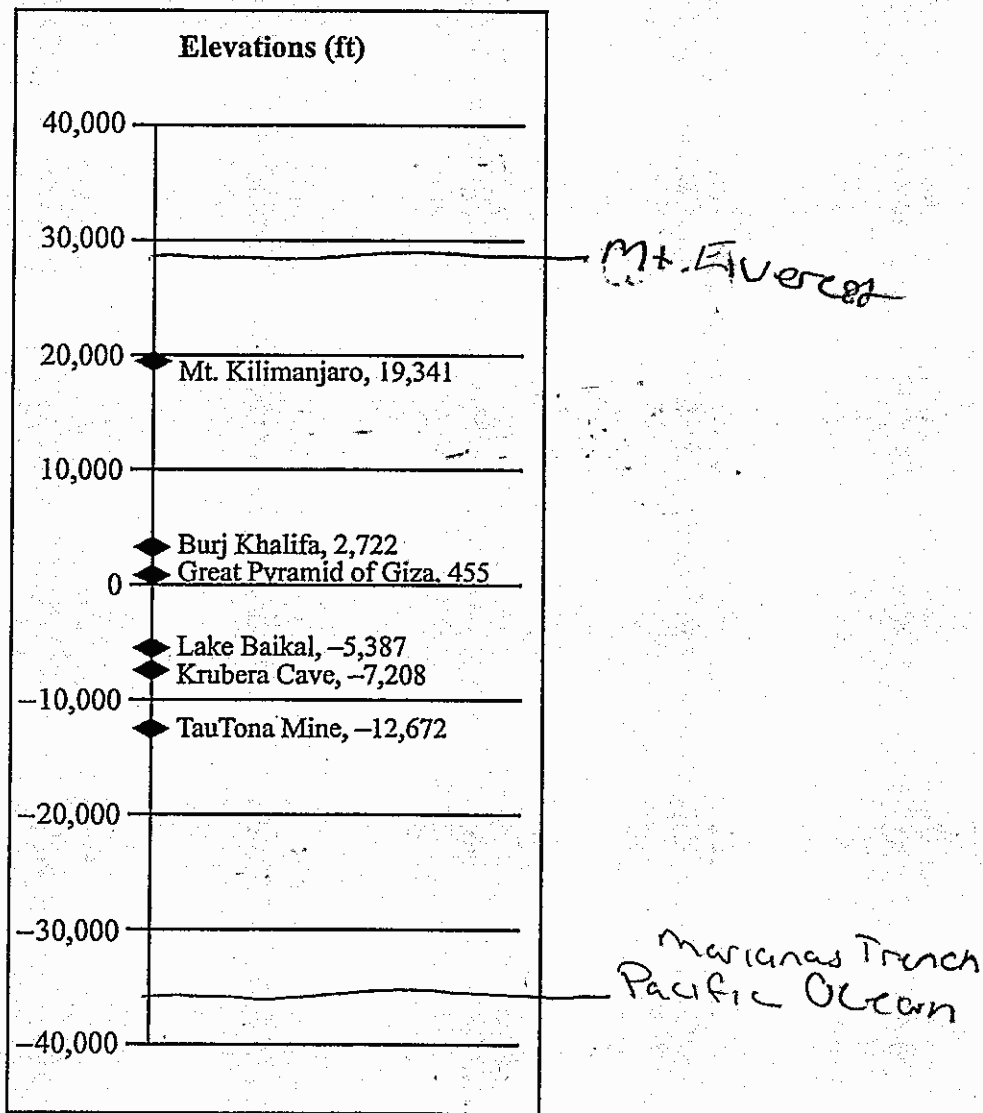
Total Practice Points: 1 (MP1)

The student correctly determines the difference in elevations in Part A (7.NS.A.1). In Part B, the student does not write two equivalent expressions which can be used to find the difference. The first expression, $A - B = 65,098$, is merely a different way of stating $29,029 - (-36,069) = 65,098$ (no credit for 7.NS.A.1c). The student completes all parts of the problem, plotting points with the Marianas Trench located below sea level, providing an answer for Part A, and giving two expressions—one involving subtraction—in Part B (MP1). The student labels the elevation of the Marianas Trench as 36,069, leaving off the negative sign, which shows a lack of precision (no credit for MP6).

Total Awarded Points: 2 out of 4

3. High and Low Elevations Task

Jahara looks in an atlas and finds that the top of Mt. Everest is 29,029 feet above sea level and the deepest part of the Marianas Trench in the Pacific Ocean is 36,069 feet below sea level. She has a number line that shows heights and depths for other physical features around the world.



- a. Represent Mt. Everest and the Marianas Trench on the number line. Use the number line to find the difference in these two elevations.

Handwritten work for part a:

$$\begin{array}{r} 2 \quad 16 \\ 36,069 \\ - 29,029 \\ \hline 7,040 \end{array}$$

The result 7,040 is boxed.

Below the boxed result, the numbers 36,069, 29,029, and 7,040 are heavily scribbled out with black ink.

- b. Write two equivalent expressions that can be used to find the difference in elevation between Mt. Everest and the Marianas Trench. At least one of the expressions must use subtraction.

Handwritten work for part b:

①

$$\begin{array}{r} 2 \quad 16 \\ 36,069 \\ - 29,029 \\ \hline 7,040 \end{array}$$

②

$$\begin{array}{r} 1 \quad 1 \\ 36,069 \\ + 29,029 \\ \hline 65,098 \end{array}$$

Anchor 6

Litho 0005

Total Content Points: 0

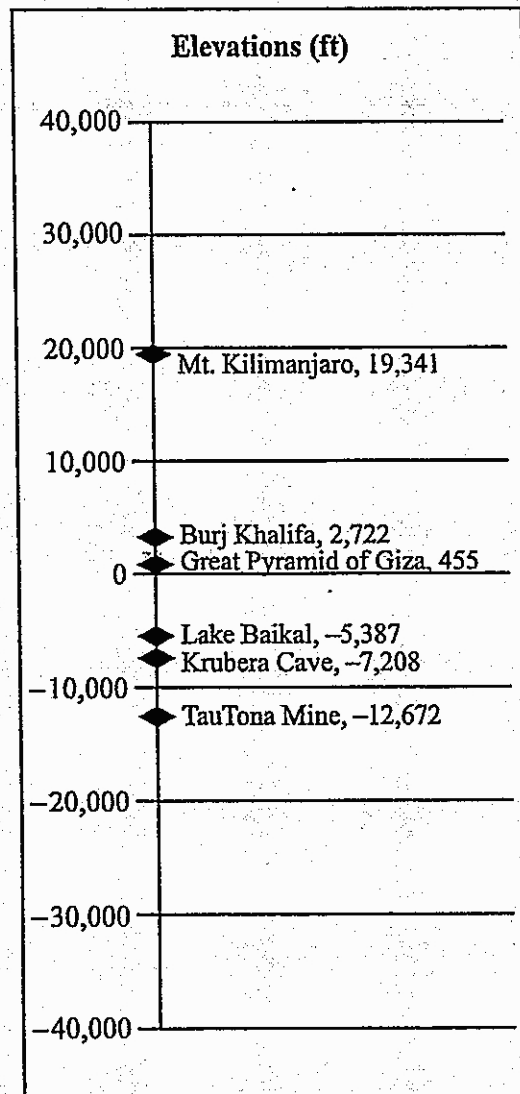
Total Practice Points: 2 (MP1, MP6)

The student does not correctly determine the difference in elevation in Part A (no credit for 7.NS.A.1). In Part B, the student does not write two equivalent expressions (no credit for 7.NS.A.1c). The student completes all parts of the problem, plotting points with the Marianas Trench located below sea level, providing an answer in Part A, and giving two expressions—one using subtraction—in Part B (MP1). All calculations are correct, and mathematical notation is precise (MP6).

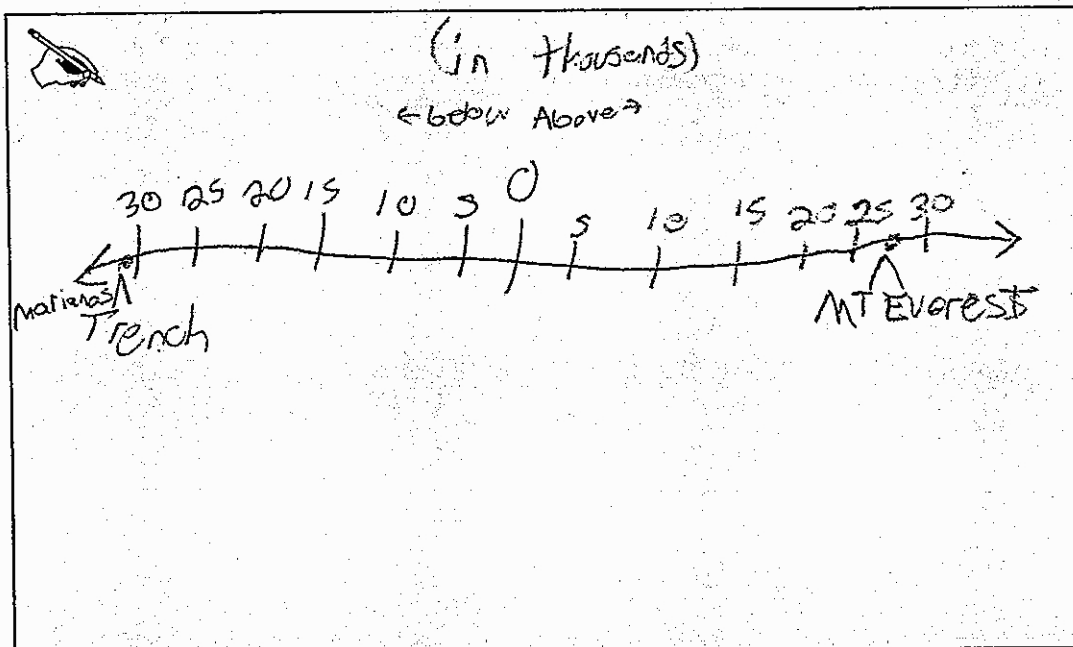
Total Awarded Points: 2 out of 4

3. High and Low Elevations Task

Jahara looks in an atlas and finds that the top of Mt. Everest is 29,029 feet above sea level and the deepest part of the Marianas Trench in the Pacific Ocean is 36,069 feet below sea level. She has a number line that shows heights and depths for other physical features around the world.



- a. Represent Mt. Everest and the Marianas Trench on the number line. Use the number line to find the difference in these two elevations.



- b. Write two equivalent expressions that can be used to find the difference in elevation between Mt. Everest and the Marianas Trench. At least one of the expressions must use subtraction.

29,029 above (Everest)
 - 36,069 below (Trench)

 65,098

36,069

Anchor 7

Litho 00397200012

Total Content Points: 1 (7.NS.A.1)

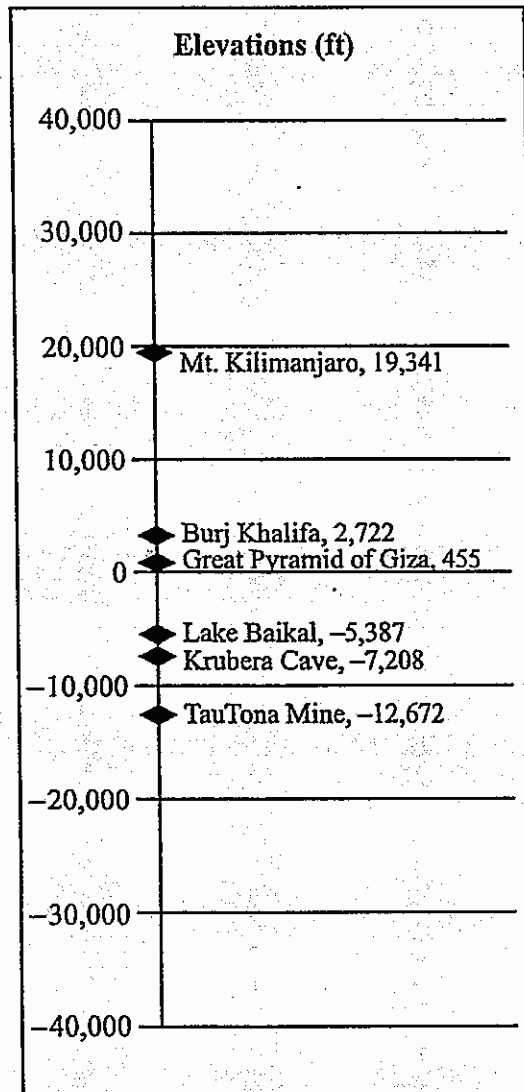
Total Practice Points: 0

The student correctly determines the difference in elevation for Part A, writing the answer in the box for Part B (7.NS.A.1). In Part B, the student writes only one expression that can be used to find the difference (no credit for 7.NS.A.1c). The student does not complete all parts of the problem, writing only one expression in Part B (no credit for MP1). The student shows a lack of precision by plotting the Marianas Trench, with an elevation of $-36,069$ feet, just below $-30,000$ on the number line (no credit for MP6).

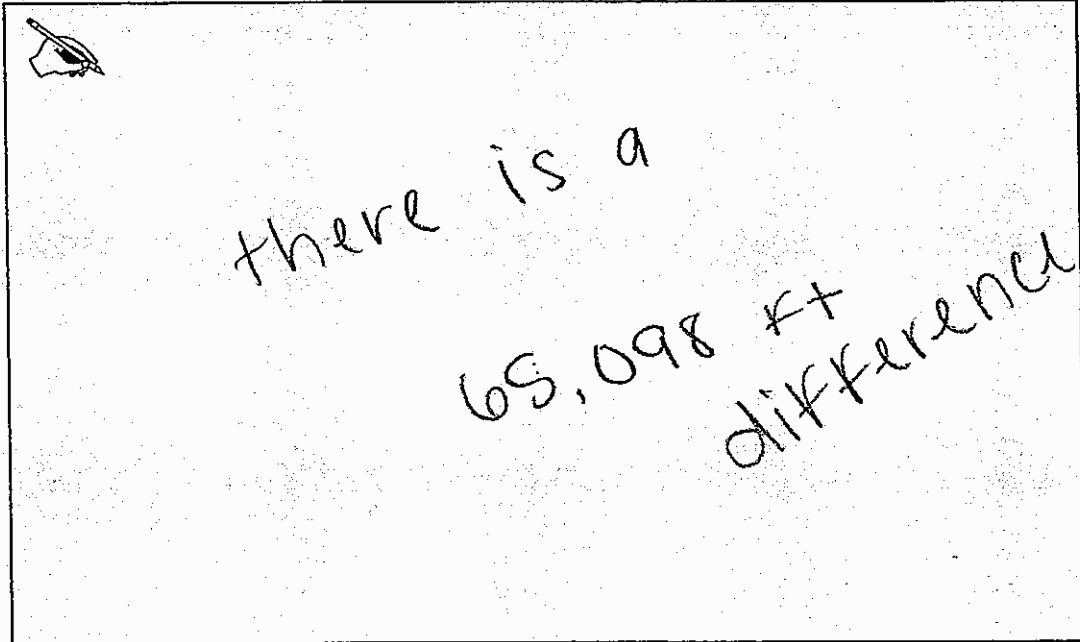
Total Awarded Points: 1 out of 4

3. High and Low Elevations Task

Jahara looks in an atlas and finds that the top of Mt. Everest is 29,029 feet above sea level and the deepest part of the Marianas Trench in the Pacific Ocean is 36,069 feet below sea level. She has a number line that shows heights and depths for other physical features around the world.

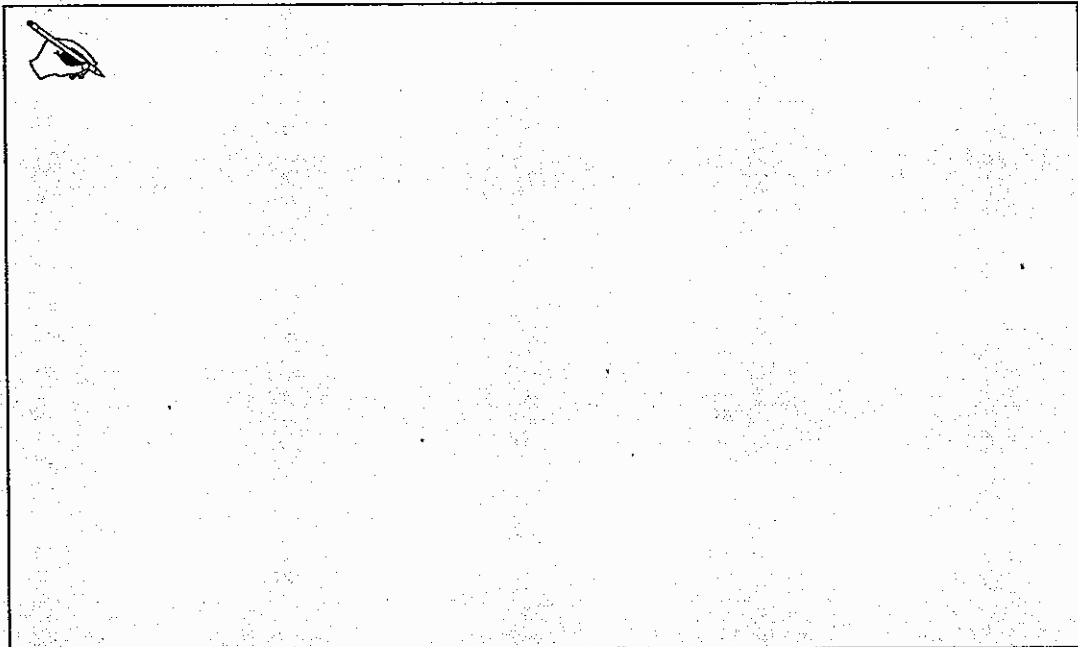


- a. Represent Mt. Everest and the Marianas Trench on the number line. Use the number line to find the difference in these two elevations.



A rectangular box containing a small drawing of a hand holding a pen in the top-left corner. The text inside the box is handwritten and reads: "there is a 65,098 ft difference."

- b. Write two equivalent expressions that can be used to find the difference in elevation between Mt. Everest and the Marianas Trench. At least one of the expressions must use subtraction.



A rectangular box containing a small drawing of a hand holding a pen in the top-left corner. The rest of the box is blank.

Anchor 8

Litho 00507200012

Total Content Points: 1 (7.NS.A.1)

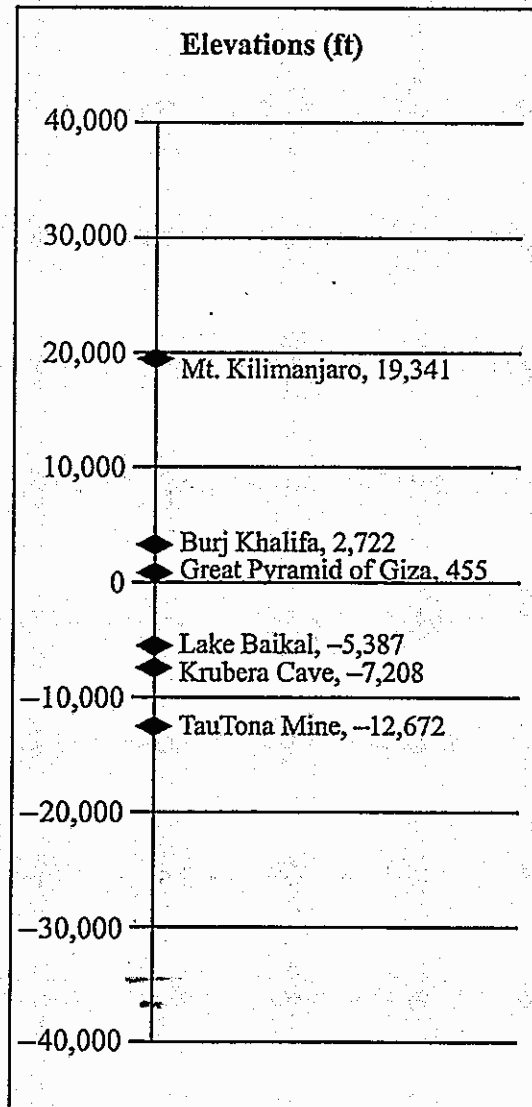
Total Practice Points: 0

The student correctly determines the difference in elevation in Part A (7.NS.A.1). In Part B, the student does not write two equivalent expressions (no credit for 7.NS.A.1c). The student does not complete all parts of the problem, failing to plot points or provide any expressions in Part B (no credit for MP1). The student provides insufficient work to demonstrate precision (no credit for MP6).


Total Awarded Points: 1 out of 4

3. High and Low Elevations Task

Jahara looks in an atlas and finds that the top of Mt. Everest is 29,029 feet above sea level and the deepest part of the Marianas Trench in the Pacific Ocean is 36,069 feet below sea level. She has a number line that shows heights and depths for other physical features around the world.



- a. Represent Mt. Everest and the Marianas Trench on the number line. Use the number line to find the difference in these two elevations.




Mt. Everest \rightarrow 29,029 Feet above sea level

Marianas trench \rightarrow 36,069 Feet below sea level

65,098 is the difference between the two of them.

- b. Write two equivalent expressions that can be used to find the difference in elevation between Mt. Everest and the Marianas Trench. At least one of the expressions must use subtraction.



$29,029 - m = 65098$

or

~~_____~~

?

Anchor 9

Litho 0063

Total Content Points: 1 (7.NS.A.1)

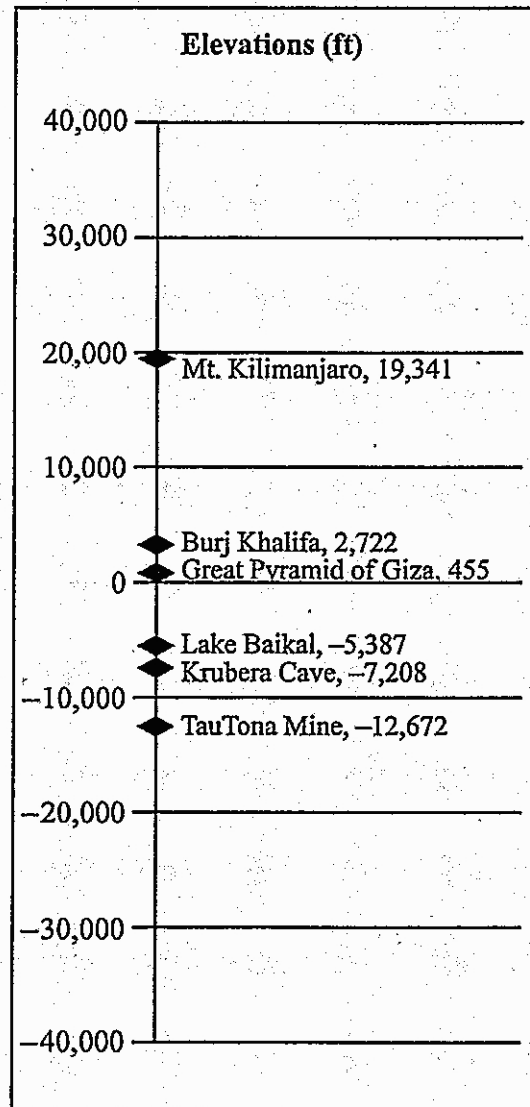
Total Practice Points: 0

The student correctly determines the difference in elevation in Part A (7.NS.A.1). In Part B, the student does not write two equivalent expressions (no credit for 7.NS.A.1c). The student does not complete all parts of the problem, failing to plot points and providing only one expression in Part B (no credit for MP1). Failing to plot the points also shows insufficient mathematical notation to demonstrate precision (no credit for MP6).

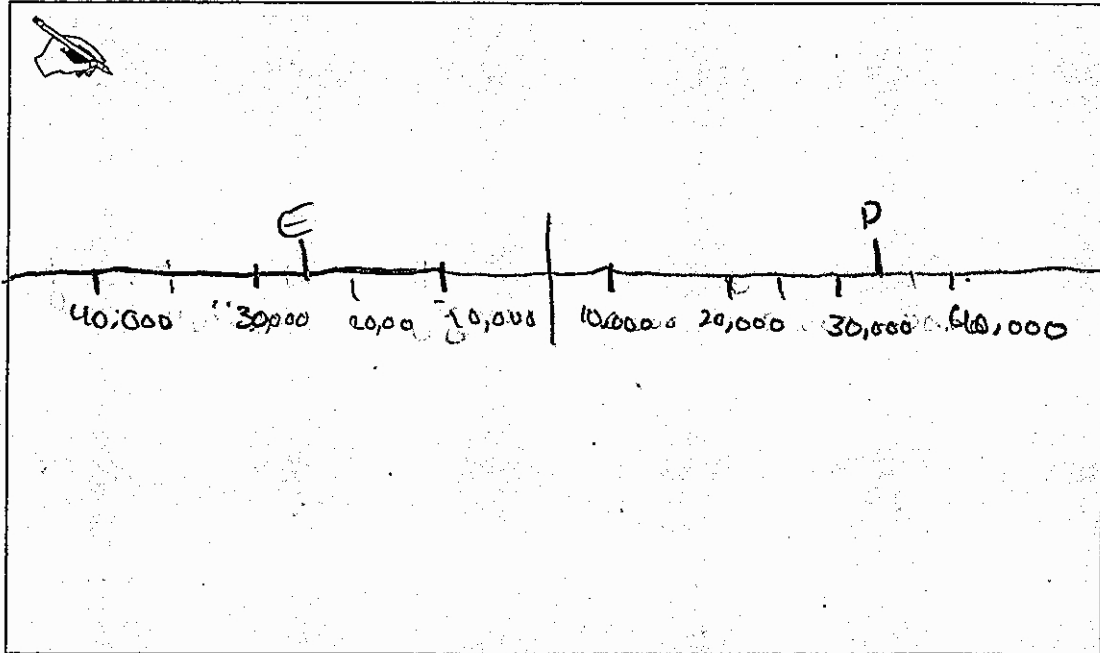
Total Awarded Points: 1 out of 4

3. High and Low Elevations Task

Jahara looks in an atlas and finds that the top of Mt. Everest is 29,029 feet above sea level and the deepest part of the Marianas Trench in the Pacific Ocean is 36,069 feet below sea level. She has a number line that shows heights and depths for other physical features around the world.



- a. Represent Mt. Everest and the Marianas Trench on the number line. Use the number line to find the difference in these two elevations.



- b. Write two equivalent expressions that can be used to find the difference in elevation between Mt. Everest and the Marianas Trench. At least one of the expressions must use subtraction.

$$x - 36,069 = 65,098$$

$$29,029 - x = 65,098$$

Anchor 10

Litho 0043

Total Content Points: 1 (7.NS.A.1)

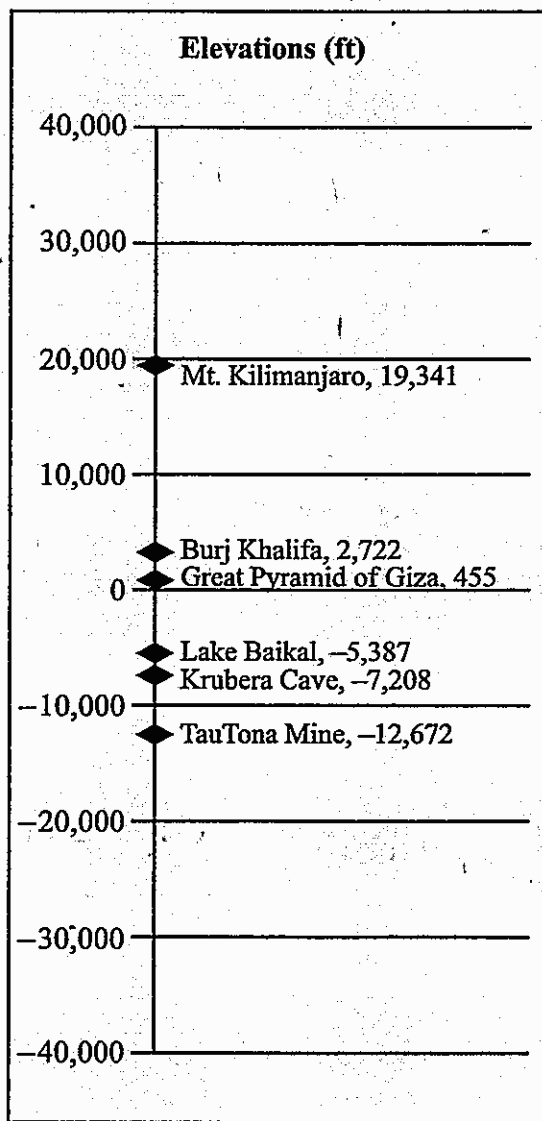
Total Practice Points: 0

The student correctly determines the difference in elevation for Part A. The same answer is given in both equations in Part B, making it the student's clear answer to Part A (7.NS.A.1). The student does not write two equivalent expressions in Part B (no credit for 7.NS.A.1c). The plotting of the points is unclear, indicating a failure to interpret the number line (no credit for MP1). That deficiency also shows a lack of precision (no credit for MP6).

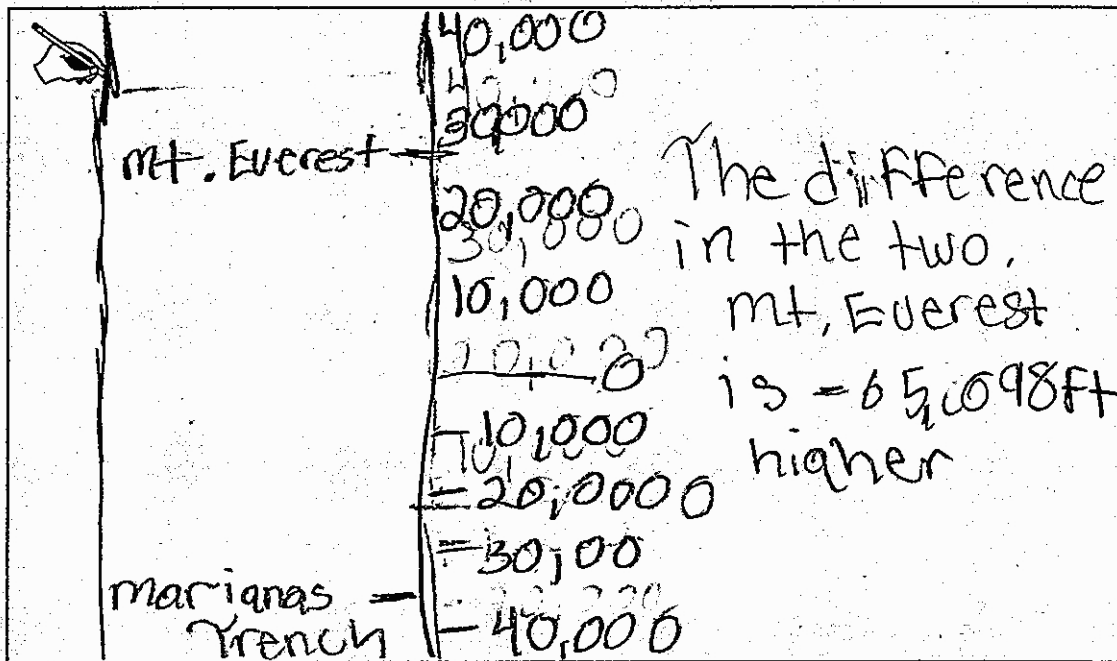
Total Awarded Points: 1 out of 4

3. High and Low Elevations Task

Jahara looks in an atlas and finds that the top of Mt. Everest is 29,029 feet above sea level and the deepest part of the Marianas Trench in the Pacific Ocean is 36,069 feet below sea level. She has a number line that shows heights and depths for other physical features around the world.



- a. Represent Mt. Everest and the Marianas Trench on the number line. Use the number line to find the difference in these two elevations.



- b. Write two equivalent expressions that can be used to find the difference in elevation between Mt. Everest and the Marianas Trench. At least one of the expressions must use subtraction.

The figure shows two handwritten equations. The first equation is $-36,069 - 29,029 = -65,098$. The second equation is $-65,098 + 29,029 = -36,069$.

Anchor 11

Litho 00057200016

Total Content Points: 0

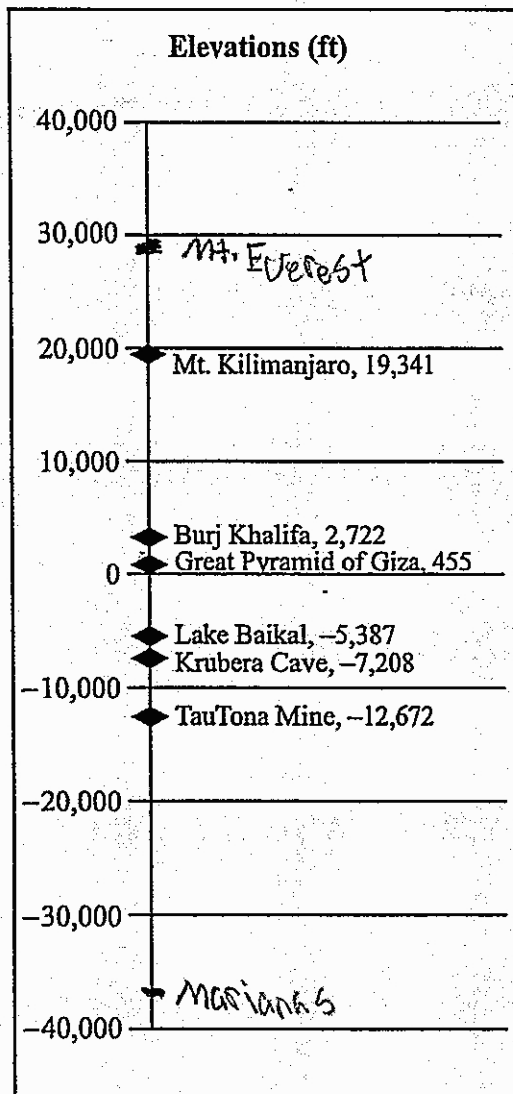
Total Practice Points: 1 (MP1)

The student does not correctly determine the difference in elevation in Part A (no credit for 7.NS.A.1). In Part B, the student does not write two equivalent expressions (no credit for 7.NS.A.1c). The student completes all parts of the problem, plotting the points with the Marianas Trench located below sea level, providing an answer in Part A, and giving two expressions—one using subtraction—in Part B (MP1). The student uses imprecise mathematical language (“Mt. Everest is $-65,098$ feet higher”) in Part A (no credit for MP6).


Total Awarded Points: 1 out of 4

3. High and Low Elevations Task

Jahara looks in an atlas and finds that the top of Mt. Everest is 29,029 feet above sea level and the deepest part of the Marianas Trench in the Pacific Ocean is 36,069 feet below sea level. She has a number line that shows heights and depths for other physical features around the world.




- a. Represent Mt. Everest and the Marianas Trench on the number line. Use the number line to find the difference in these two elevations.



Turn to pg. 6 to see

- b. Write two equivalent expressions that can be used to find the difference in elevation between Mt. Everest and the Marianas Trench. At least one of the expressions must use subtraction.

 $\begin{array}{r} 36,069 \\ - 29,029 \\ \hline 7,040 \end{array} \checkmark$	$\begin{array}{r} 36,069 \\ + 29,029 \\ \hline 65,098 \end{array} \checkmark$
$\begin{array}{r} 36,069 \\ \times 29,029 \\ \hline 1047097001 \end{array} \times$	$\begin{array}{r} 36,069 \\ \div 29,029 \\ \hline 1.24 \end{array} \times$

Anchor 12

Litho 00627200012

Total Content Points: 0

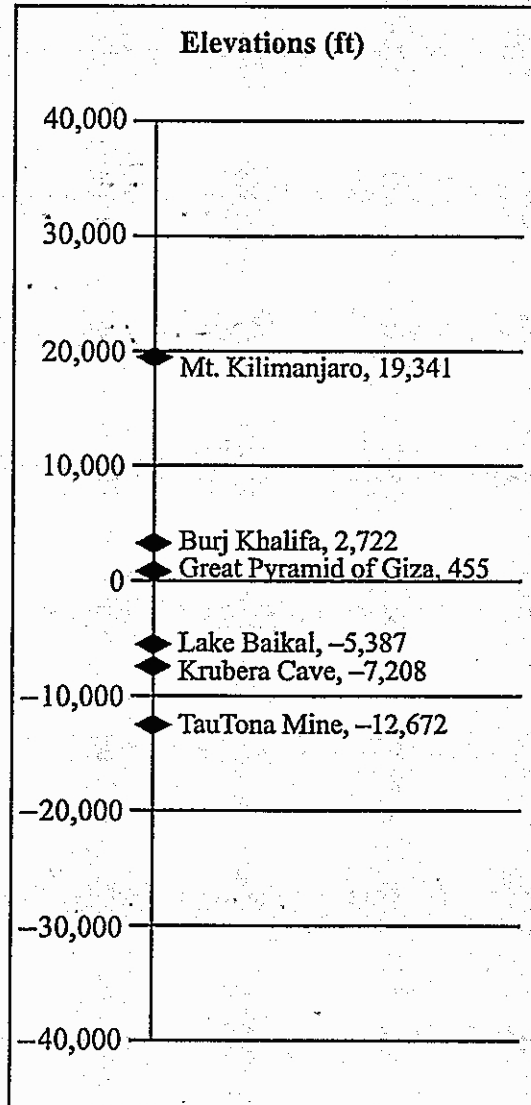
Total Practice Points: 1 (MP6)

The student does not determine the difference in elevation for Part A. Because multiple answers are given in Part B, it is unknown which of the two checked calculations was meant as an answer to Part A (no credit for 7.NS.A.1). For Part B, the student does not write two equivalent expressions (no credit for 7.NS.A.1c). The student does not complete all parts of the problem, failing to provide a clear answer to Part A (no credit for MP1). All calculations are correct, and while mathematical language is not needed mathematical notation is precise (MP6).

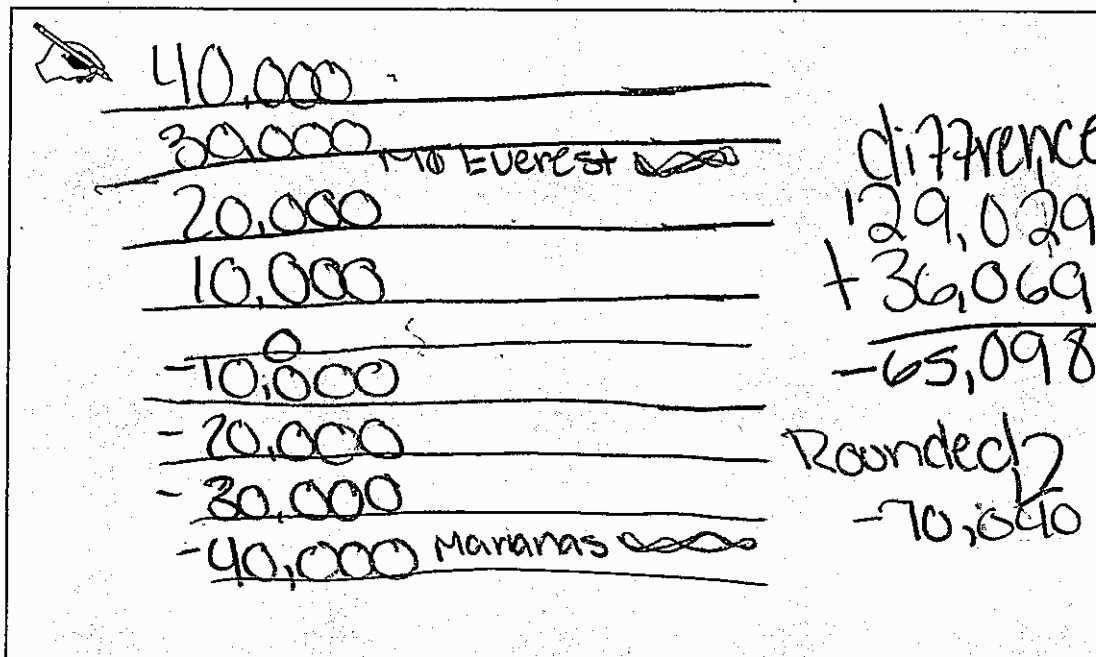
Total Awarded Points: 1 out of 4

3. High and Low Elevations Task

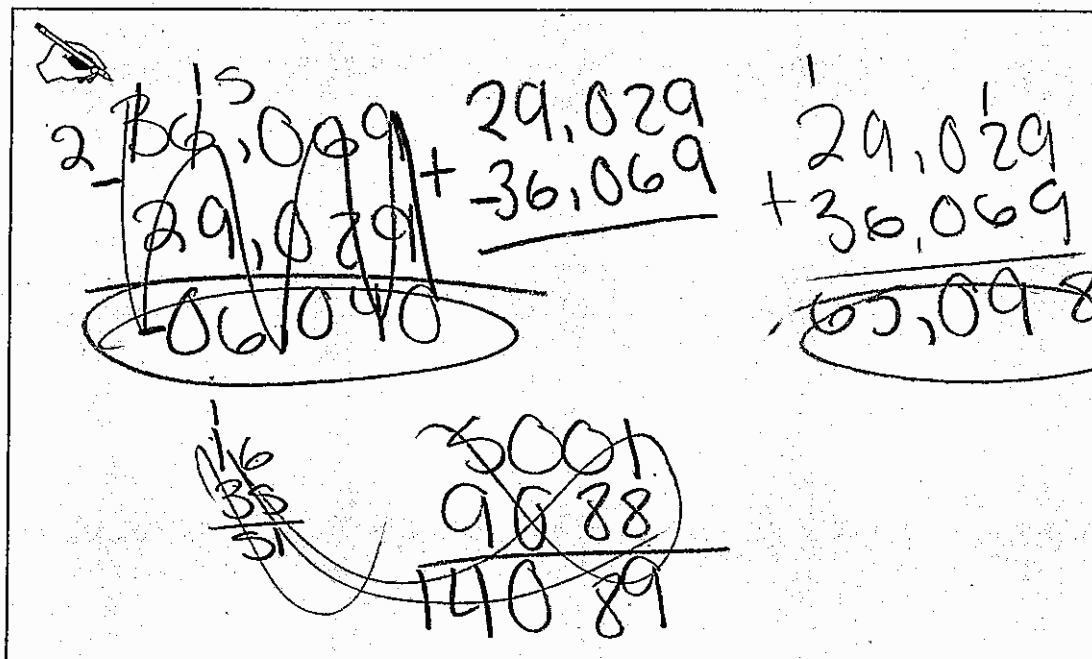
Jahara looks in an atlas and finds that the top of Mt. Everest is 29,029 feet above sea level and the deepest part of the Marianas Trench in the Pacific Ocean is 36,069 feet below sea level. She has a number line that shows heights and depths for other physical features around the world.



- a. Represent Mt. Everest and the Marianas Trench on the number line. Use the number line to find the difference in these two elevations.



- b. Write two equivalent expressions that can be used to find the difference in elevation between Mt. Everest and the Marianas Trench. At least one of the expressions must use subtraction.



Anchor 13

Litho 0030

Total Content Points: 0

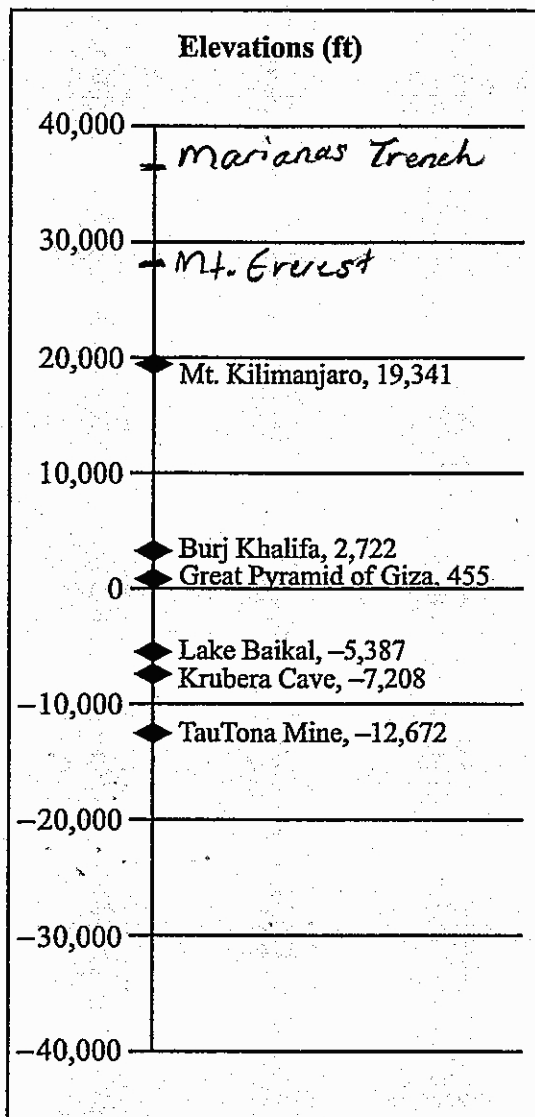
Total Practice Points: 0

The student does not correctly determine the difference in elevation, which should be positive and not negative, in Part A (no credit for 7.NS.A.1). In Part B, the student does not write two equivalent expressions (no credit for 7.NS.A.1c). The student does not complete all parts of the problem. While two expressions are provided in Part B, neither $29,029 + 36,069 = 65,098$, nor $29,029 + -36,069$ uses subtraction (no credit for MP1). The student makes a mathematical error in Part A, adding two positive numbers and getting a negative sum (no credit for MP6).

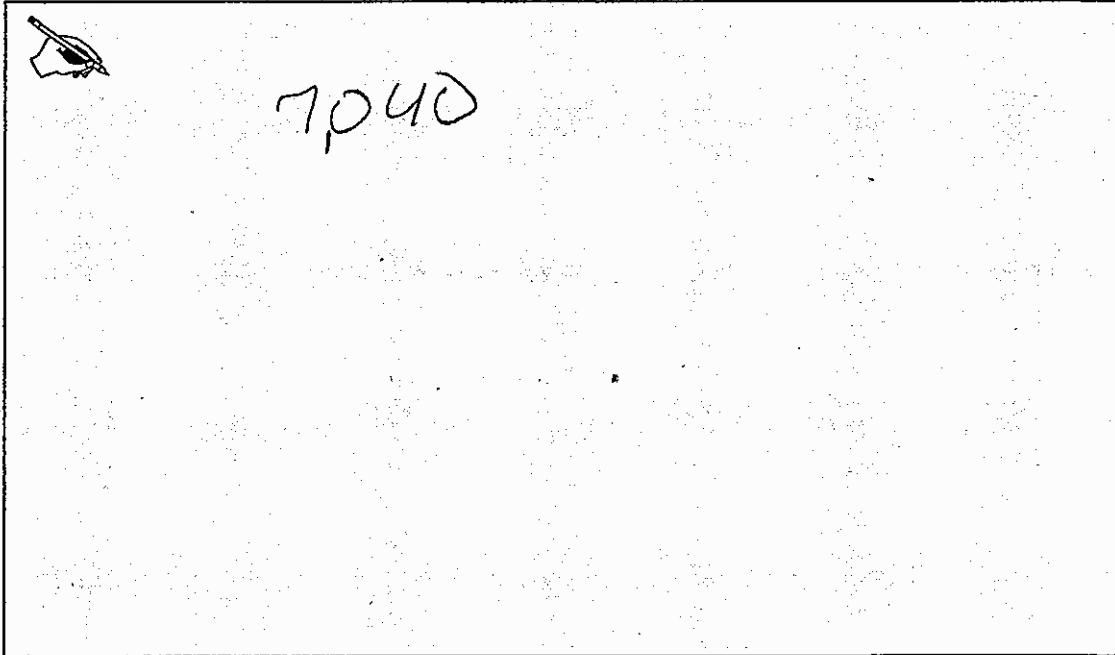
Total Awarded Points: 0 out of 4

3. High and Low Elevations Task

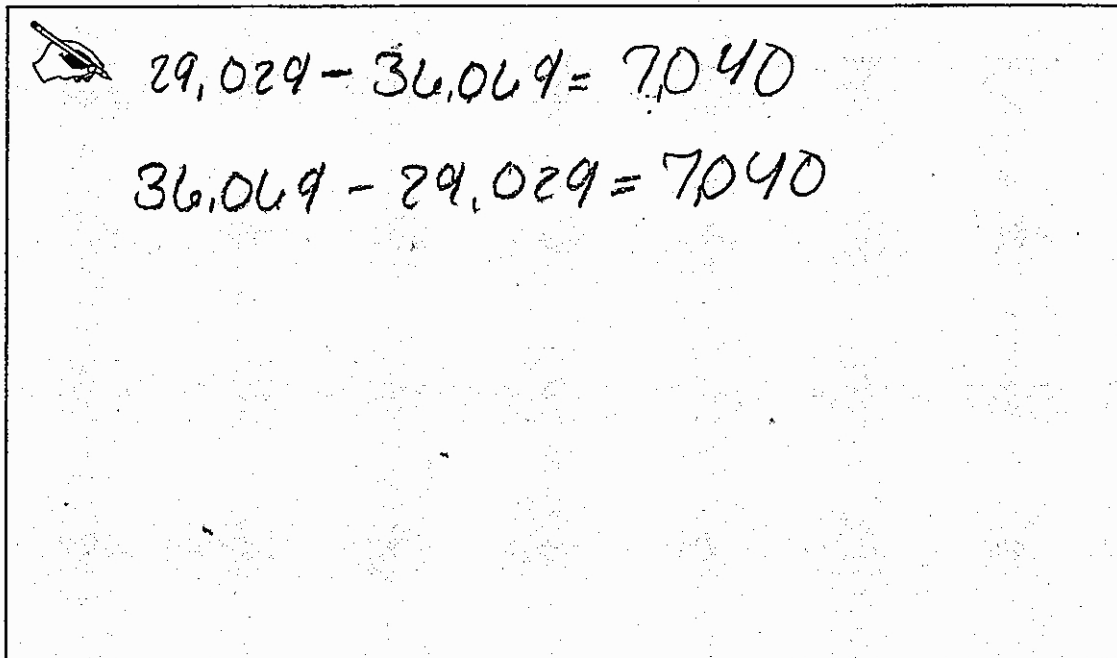
Jahara looks in an atlas and finds that the top of Mt. Everest is 29,029 feet above sea level and the deepest part of the Marianas Trench in the Pacific Ocean is 36,069 feet below sea level. She has a number line that shows heights and depths for other physical features around the world.



- a. Represent Mt. Everest and the Marianas Trench on the number line. Use the number line to find the difference in these two elevations.



- b. Write two equivalent expressions that can be used to find the difference in elevation between Mt. Everest and the Marianas Trench. At least one of the expressions must use subtraction.



Anchor 14

Litho 00497200016

Total Content Points: 0

Total Practice Points: 0

The student does not determine the correct difference in elevation in Part A (no credit for 7.NS.A.1). In Part B, the student does not write two equivalent expressions (no credit for 7.NS.A.1c). The student does not complete all parts of the problem. Plotting the Marianas Trench above sea level indicates a failure to correctly interpret the number line (no credit for MP1). The student plots the Marianas Trench inaccurately and makes a mathematical error in Part B, indicating a lack of precision (no credit for MP6).

Total Awarded Points: 0 out of 4